



lokseal™

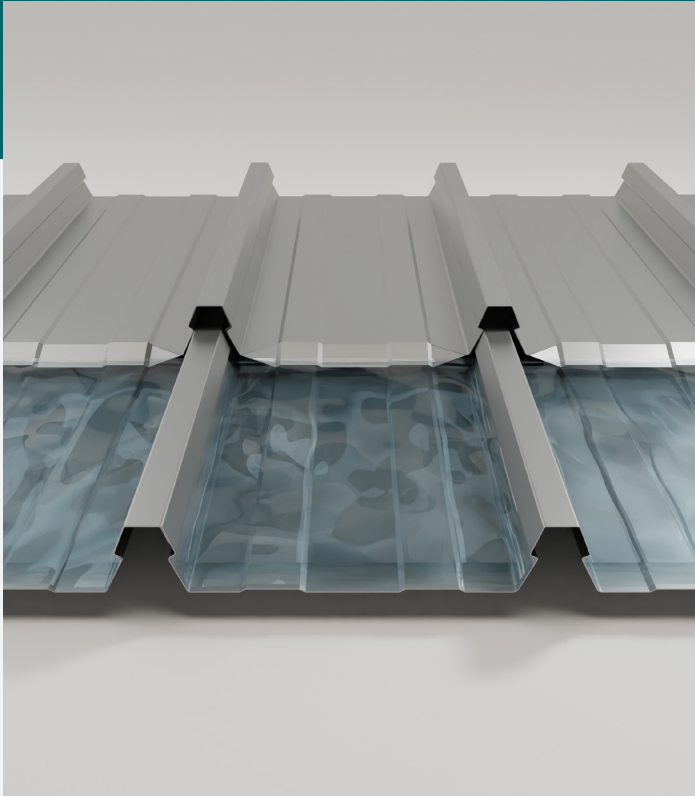
ROOF LAP JOINT SYSTEM FOR METLOK 700 HP ROOFING



 **Metroll®**
BETTER SERVICE • BETTER BUILDING SOLUTIONS

LOKSEAL

ROOF LAP JOINT SYSTEM FOR METLOK 700 HP ROOFING

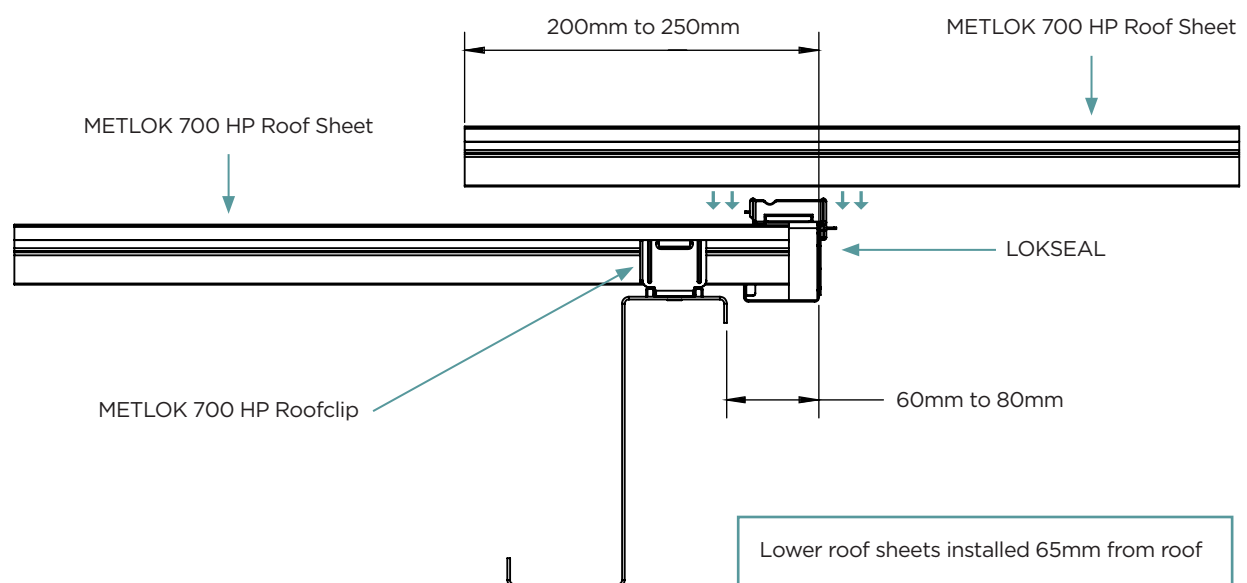


LOKSEAL is a patented roof lap joining and sealing system for METLOK 700 HP roofing, providing roofing installers with a fast and easy, cost effective solution to long-length roof sheet spans.

LOKSEAL is a high-strength steel clip and has been tested to withstand the rigours of high wind and rainfall events. Uplift tested to comply with Australian standards AS/NZS 1170.2.

LOKSEAL has been leak seal tested to a new high standard of submersion testing to 16L/m².

INSTALLATION SECTION VIEW



Lower roof sheets installed 65mm from roof structural member, upper roof sheets to overhang by 250mm to 275mm as shown.

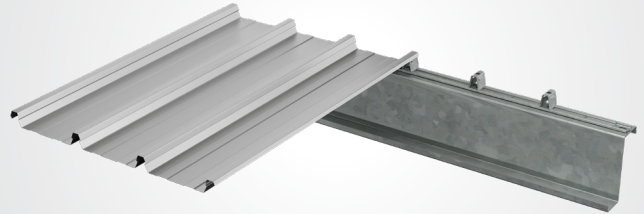
INSTALLATION STEPS

CLIP FIX ROOF SHEETS



STEP 1

Screw down concealed deck clips onto roof structure and install / clip-down the lower run of roof sheets.



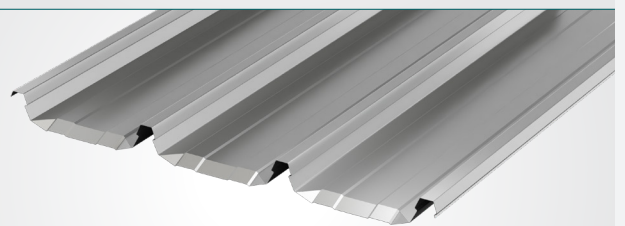
STEP 2

Slide the LOKSEAL lengths into the ribs of the roof sheet, tekscrew through each clip tower which securely attaches the lapsel to the roof sheets. Continue this step down the length of the lower run of roof sheets. Ensure LOKSEAL is pressed against roof sheet when fixing tekscrew to achieve seal.



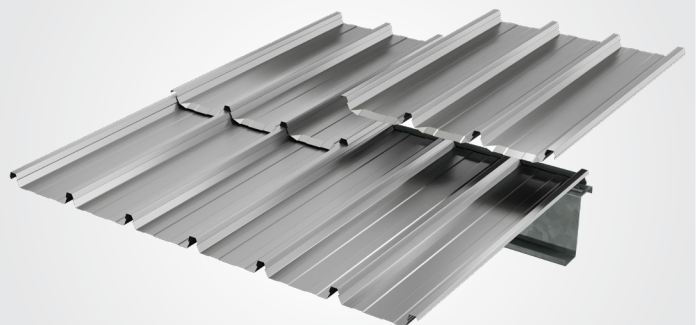
STEP 3

Turn down 'pan' section of upper run of roof sheets.



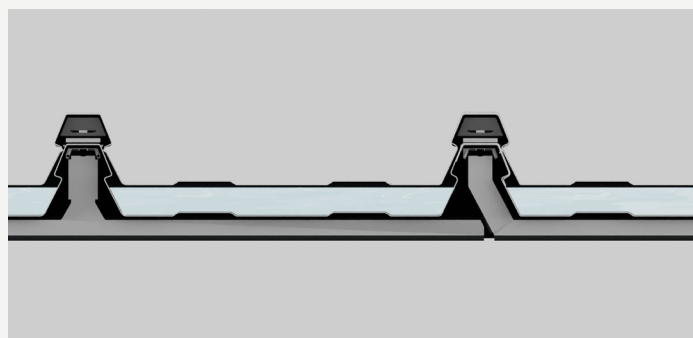
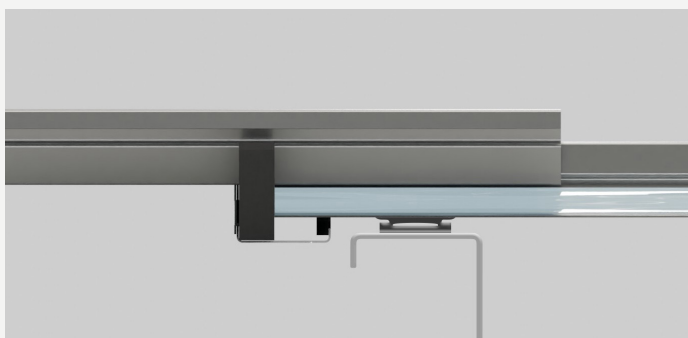
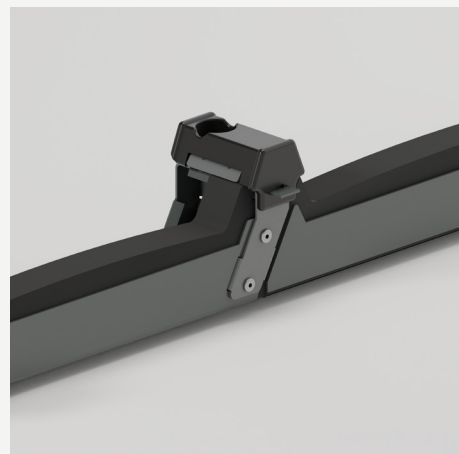
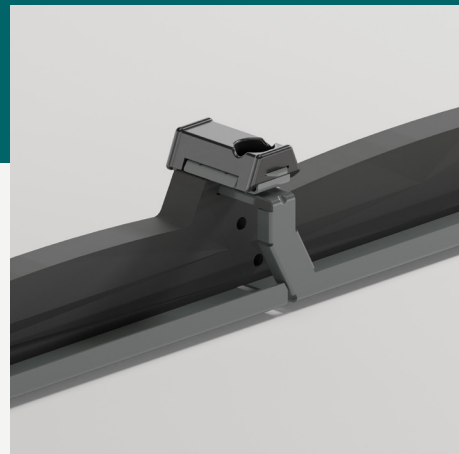
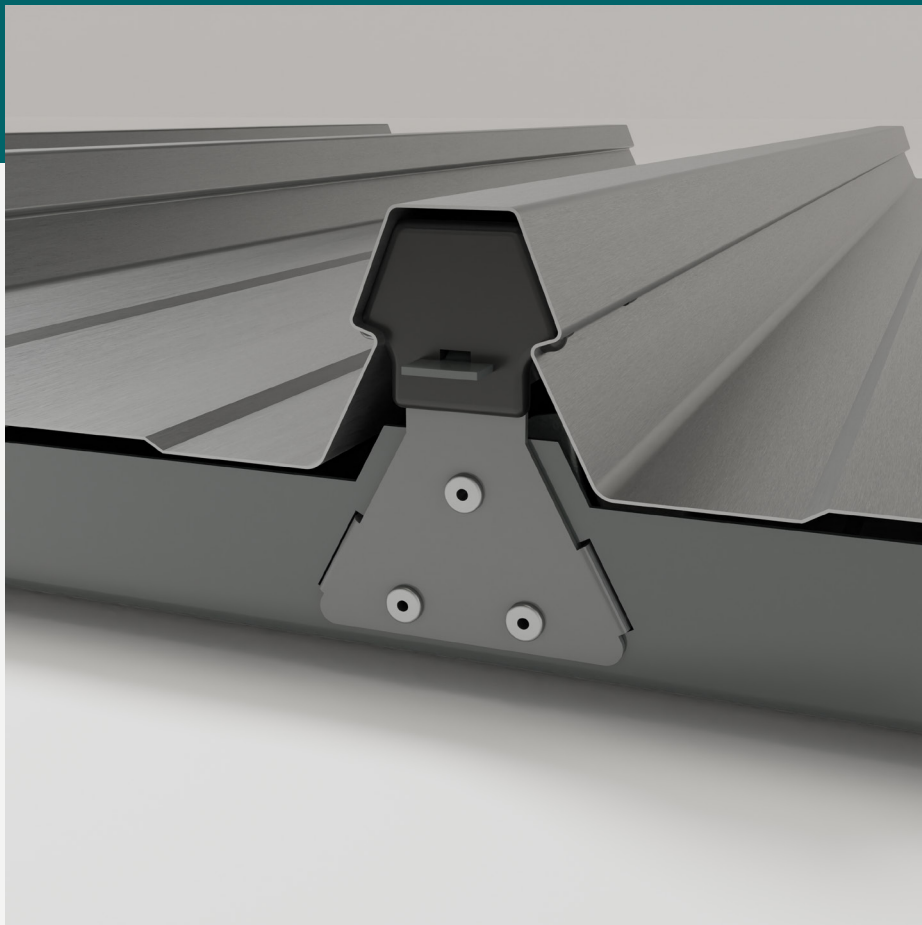
STEP 4

Install the upper run of roof sheets, LOKSEAL is then encased between the joining roof sheets and forms a strong connection and sealed joint of the upper and lower roof sheets.



LOKSEAL

ROOF LAP JOINT SYSTEM FOR METROLL HP CONCEALED FIX DECKING



Metroll Pty Ltd. ABN 97 001 446 439. All reasonable care has been taken in the compilation of the information contained in this brochure. All recommendations on the use of Metroll products are made without guarantee as conditions of use are beyond the control of Metroll Pty Ltd. It is the customers responsibility to ensure that the product is fit for its intended purpose and that the actual conditions of use are suitable. Metroll Pty Ltd. pursues a policy of continuous development and reserves the right to amend specifications without prior notice.

The Metroll M and Logo are registered trademarks of Metroll Pty Ltd. COLORBOND®, ZINCALUME®, GALVSPAN® steels are all registered trademarks of BlueScope Steel Limited.

**Contact your
local branch for
more information**

WWW.METROLL.COM.AU

